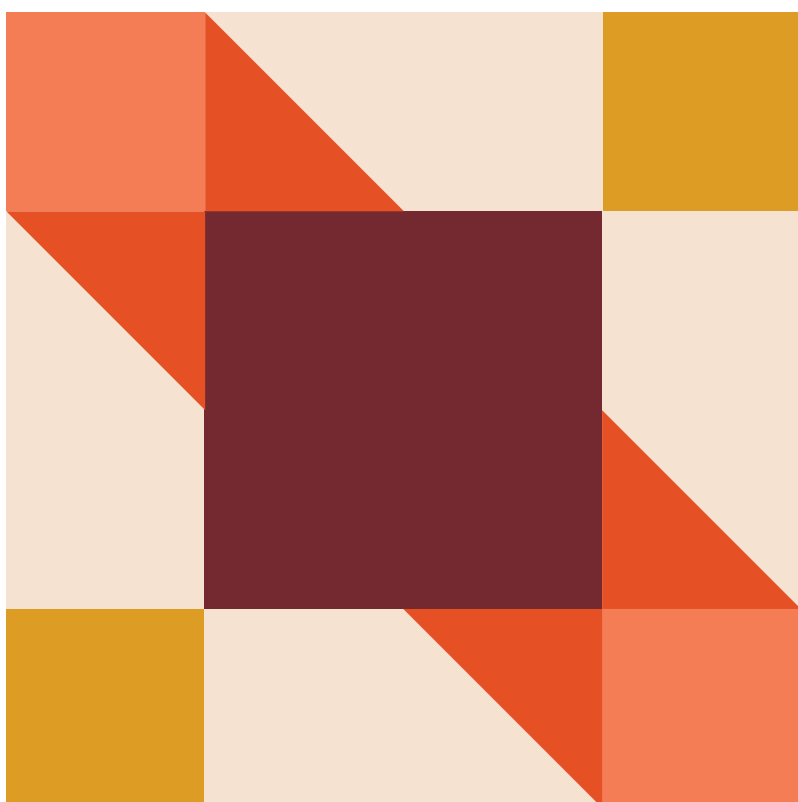


THE OKLAHOMA INDIAN BLANKET

Designed by Ashli Montgomery



Inspired by Oklahoma's state wildflower, *Gaillardia pulchella* (also called the **Indian Blanket**), and a play on the traditional "Road to Oklahoma" block, The Oklahoma Indian Blanket block is reminiscent of a gorgeous Oklahoma sunset.

A wonderful block for all experience levels!

Ashli Montgomery is a coach's wife, mom, speaker and writer sharing quilts, Alzheimer's, yoga, and life through her blog at www.MeAndCoach.com.

Ashli is spearheading a community of friends who love quilts and quilting but hate Alzheimer's disease. Please join us at www.Quilt2EndALZ.org.



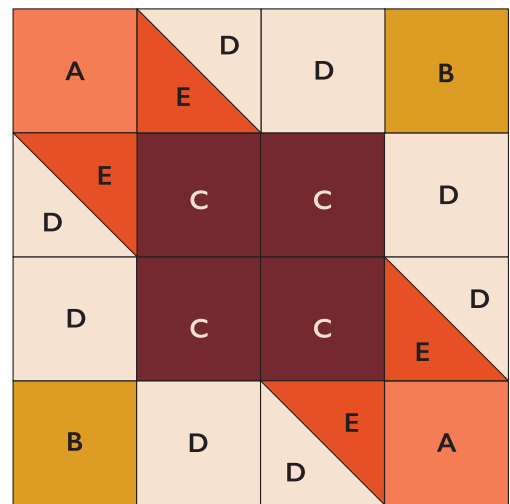
THE OKLAHOMA INDIAN BLANKET BLOCK PATTERN

Finished Block: 6" x 6" | Unfinished Block: 6.5" x 6.5"

Use a scant $\frac{1}{4}$ " seam allowance throughout.

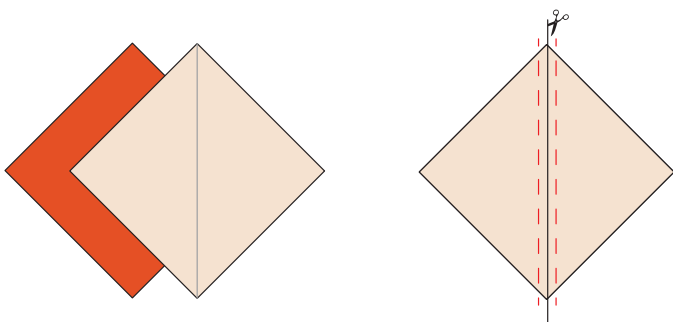
HST = Half-Square Triangle

MATERIALS & CUTTING INSTRUCTIONS	
Fabric A - Pale Coral	(2) 2" Squares
Fabric B - Golden Yellow	(2) 2" Squares
Fabric C - Brick Red	(4) 2" Squares
Fabric D - Muslin or Light Cream	(4) 2" Squares (2) $2\frac{3}{8}$ " Squares
Fabric E - Coral/Orange Print	(2) $2\frac{3}{8}$ " Squares



CREATE (4) HST UNITS USING FABRICS D AND E

1. With a pencil, draw a diagonal line on the back of each $2\frac{3}{8}$ " Fabric D square.
2. Stack one $2\frac{3}{8}$ " Fabric D square on one $2\frac{3}{8}$ " Fabric E square, right sides together.



3. Stitch a scant $\frac{1}{4}$ " on either side of the pencil line.
4. Cut along the diagonal line and press each unit towards the darker fabric.
5. Trim each HST to 2" square.
6. Repeat to make a total of (4) HST units.

DIAGRAM A

CREATE CORNER UNITS

1. Using 1 Fabric A square, 1 Fabric C square, and (2) HST units, layout as shown in **diagram B** and sew together.
2. Make (2) of these.
3. Using (1) Fabric B square, 1 Fabric C square, and (2) Fabric D squares, layout as shown in **diagram C** and sew together.
4. Make (2) of these.

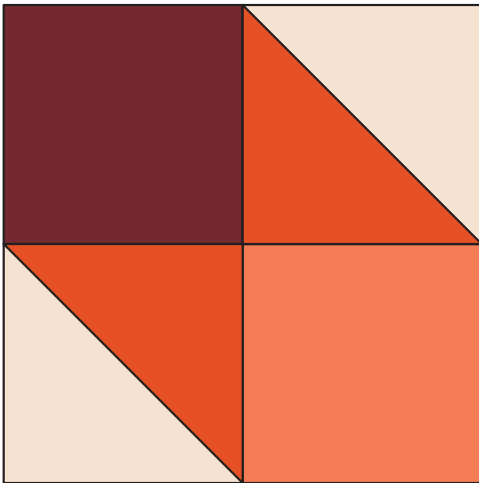


DIAGRAM B

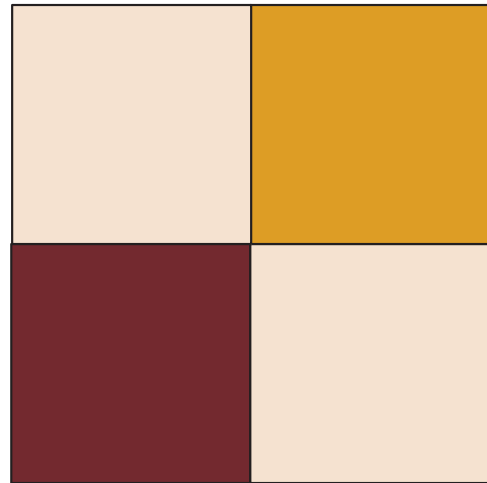


DIAGRAM C

5. Layout all (4) Corner Units as shown in **diagram D** and sew to together to complete block.

Unfinished block should measure 6.5" x 6.5"

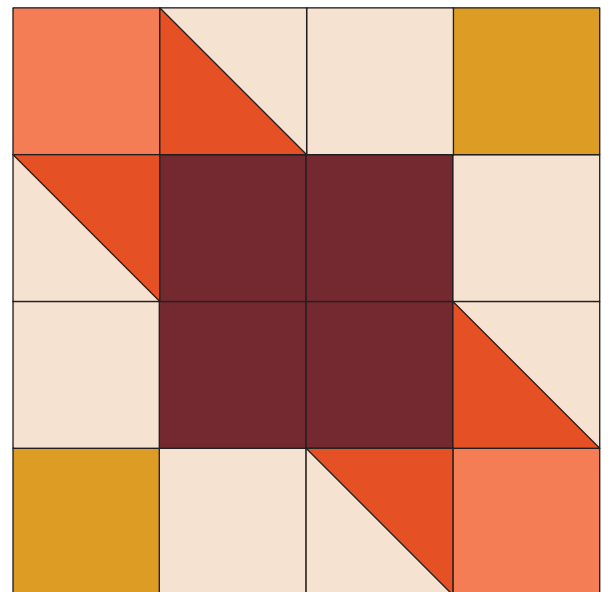


DIAGRAM D

THE OKLAHOMA INDIAN BLANKET
COLORING PAGE

